



Richardson Republican Women

Quarterly Newsletter - January 2026

A Message from President Shirley Raven

Having served as president in years past, I am honored to return to that role and excited to begin our new year together at Richardson Republican Women.

2026 will be a busy year for us. Beginning with the primary elections in March and ending with the midterm elections in November. We will have a lot of work to do.

As always, our focus will be electing Republicans across the state and our nation. There is a lot to be done; from making phone calls, texting, block walking, etc.

Whether through our monthly meetings, community service projects, or social gatherings, our goal is to strengthen the bonds we share and make an impact both within our club and in the community.

Keep an eye on your email for details on upcoming meetings and events.

YOUR VOICE MATTERS! I encourage each of you to share your thoughts on programs you would like us to consider or speakers you would like to hear from at our general meeting.

My motto is "If it's going to be, it's up to me.".....If it's going to be, it's up to you too.

In the wild, female elephants are known as fierce protectors. And when one of their sisters is suffering, they circle around her. They close in tight, watch guard, and even kick dust around her to mask her venerable scent from predators.

And yet we are the same. This is who we are, and who we are meant to be for each other. Sometimes we are the ones in the middle. Sometimes we are the ones kicking up dust with fierce, fierce love. But the circle remains.

Thank you for being fierce Republican elephants.

(Borrowed from The Festive Farm Co.)





Chaplain's Corner

Dr. Anne Slagel

execdirector@dallasgop.org

SEASON OF LOVE

February is the month of LOVE.... But LOVE should be an everyday experience...
How do you define the meaning of LOVE?

Webster defines love as:

"An intense feeling of deep affection for another arising out of kinship or personal ties."

I like the word "personal". To me love is personal, it is defined by the individual. Many have tried for centuries to define love, to write poems, stories, songs of love, books about love, then attempt to categorize it into Love Languages. Even TV shows define February as "Loveuary."

The BIBLE defines GOD'S love as the ultimate act of LOVE in John 3:16, For God so loved the world that He gave His only son so that whoever believed in Him should not perish but have eternal life.

Love is tied up into our emotions. We can act silly, funny, crazy, passionate, bizarre and even cruel over our perception of love. Love has no boundaries. It extends far beyond another individual, to our family and friends, our possessions, acts of kindness, our community, state and country.

Each of you beautiful loving RRW women exude love every day in so many ways other than personal.

You give of your time, labor, leadership and finances. You reach out to your communities and fellow women to better our state and country. You believe in the right causes and fight for the best leadership. You are heroes and you are loved.

While writing this article and searching for serious meanings of love to share with you, suddenly my phone rang and it was my 4 year old grandson calling me for Valentine's Day.

I answered, "Hi Joey. Happy Valentine's Day"

Joey said, "Hey Grandy, how do you get rid of love butterflies in your stomach?"

I said, "I don't know Joey, how?" "You stop eating caterpillars," he stated with a giggling tone of satisfaction and laughed in his boyish high pitch, as only a child can do, then click, he hung up. I didn't even get a chance to reply.

I thought as I was laughing to myself, isn't that the truth of love coming from a small child. Joey interrupted my serious search and reminded me that a simple gesture from someone you love is the best feeling of love. Love is simple and the best definitions are simple. It is a powerful experience.

1 Corinthians 13:4-8 4 Love is patient, love is kind. It does not envy, it does not boast, it is not proud. 5 It does not dishonor others, it is not self-seeking, it is not easily angered, it keeps no record of wrongs. 6 Love does not delight in evil but rejoices with the truth. 7 It always protects, always trusts, always hopes, always perseveres. 8 Love never fails.

Each act of LOVE should be recognized, appreciated and celebrated daily. Each of you are full of LOVE. You represent LOVE in your individual ways. You share LOVE generously and boldly. I am blessed to witness some of your acts of LOVE.

Your Chaplain,
Anne

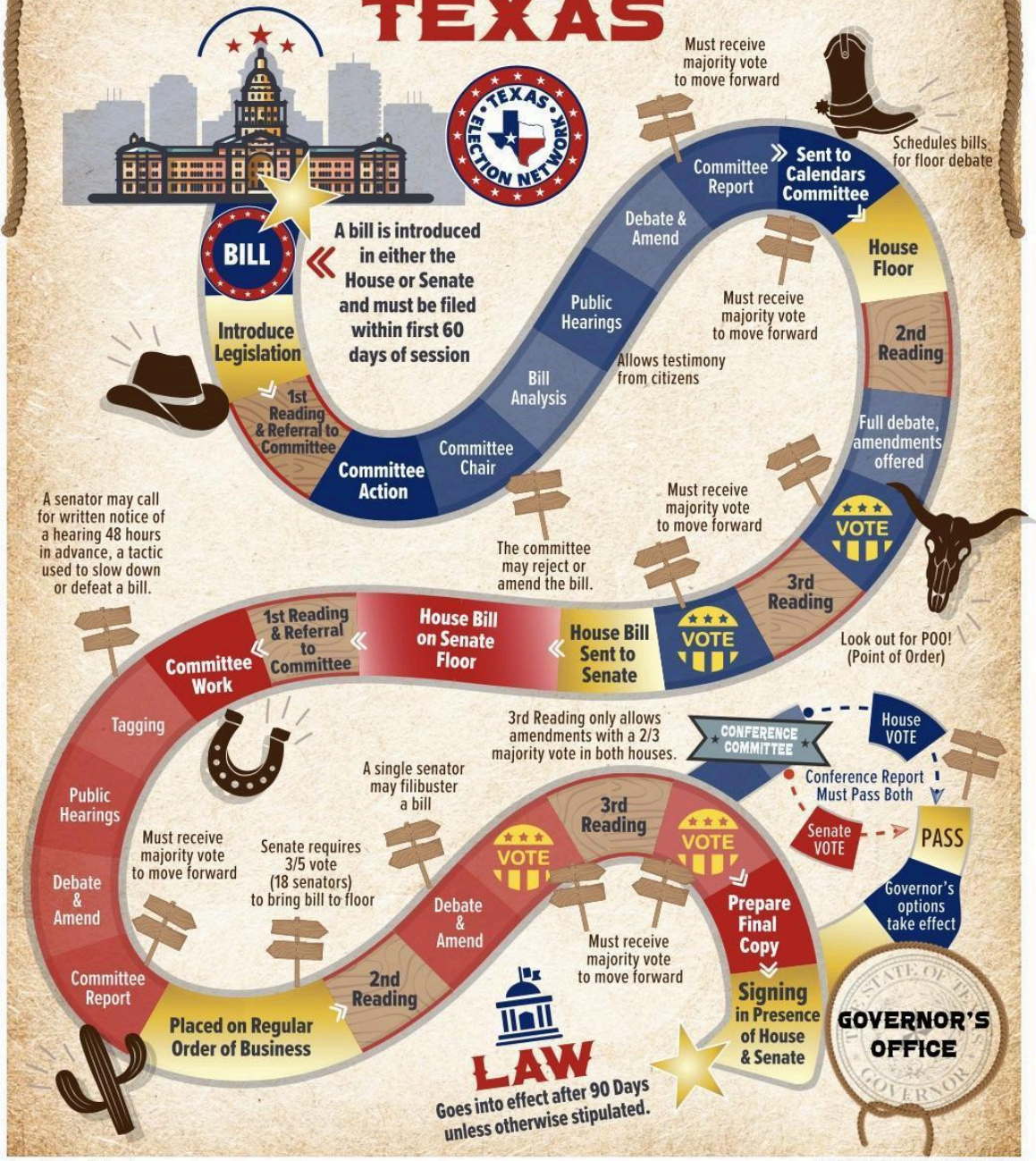
A Call to Action from Daphne Dark, Chair of Legislation



The 2026 Primary Elections are here! Now is the time to take action. There are several ways to get involved and stay informed.

1. Election Workers: Election Judge, clerks, poll watchers and poll greeters: Sign up at dallasgop.org to be contacted by Miss Lee Jenkins.
2. Attend Meet & Greets for Republican Primary Candidates: Meet the candidates and others to get involved with a candidate's campaign. <https://dallasgop.org/event/>
3. True Texas Project Get Out the Vote Saturday, February 7th. Statewide canvassing with candidates in your area. truetexasproject.com/events/
4. Weekly GOP Brief from Dr. Anne Slagel, Executive Director. Sign up dallasgop.org
5. Vote in the Republican Primary. Create a list of 10 people; friends, family, church members and neighbors to go to the polls. Follow up with them! Make it your mission.
6. If Christians are not engaged with politics, decisions will be made by people who think God is irrelevant and the truth of God's word does not exist.

HOW A BILL BECOMES LAW IN TEXAS



January Membership Update VP Membership Florence Allwood

January has brought strong renewals and new member interest to Richardson Republican Women. We're excited to welcome new faces while reconnecting with returning members who make our organization thrive.

If you haven't renewed yet, now is the perfect time. We invite you to share RRW with friends who value leadership, civic engagement, and community.

Membership with a Purpose.

Richardson Republican
Women

**RENEW YOUR
MEMBERSHIP**

BEFORE JANUARY 31st!

Act Now to Lock In This Year's Rate of *Only*
\$40

Membership Price Will Increase to
\$45 on February 1st

★ Renew Now & Save! ★

- ★ Lock in the \$40 rate
- ★ The price increases to \$45 starting February 1st
- ★ Let's make 2026 a strong year together

Don't Wait — Renew Your Membership Today!

www.rrwpac.com

[f](https://www.facebook.com/rrw1958) [f](https://www.facebook.com/rrw1958) [i](https://www.instagram.com/rrw1958) rrw1958@gmail.com

Website: www.rrwpac.com



Support the Richardson Republican Women- Join the Patron Program

Working Together for Victory in 2026

As we approach the pivotal 2026 Elections, our commitment to supporting Republican Elected Officials and Candidates has never been stronger. The Richardson Republican Women are dedicated to making a difference in our community and ensuring that our values are represented at all levels of government.

The Patron Program: Strengthening Our Mission

To boost our efforts and extend our reach, we have established the Patron Program. This initiative will supplement our support for Republican Candidates and to further our community service projects. The Patron Program is open to everyone who wishes to contribute and play a vital role in the success of the Republican Party.

Why Your Support Matters

The 2026 election is critical, and the stakes are high. Our freedoms and the future of our country depend on our collective success. We must work together to ensure a decisive Republican victory. By joining the Patron Program, you are directly supporting our mission to WIN BIG and protect our values.

Patron Program Levels

- **Patron:** \$100 Includes an RRW Commemorative Pen, and a US flag,
- **Freedom Patron:** \$250 Includes a 19 oz. RRW tumbler, an RRW Pen, and a US Flag.
- **Liberty Patron:** \$500 Includes 1 primary membership, a 19 oz. RRW tumbler, RRW Pen, a US Flag, a local restaurant gift card.
- **Patriot Patron:** \$1,000 Includes 1 primary membership, 1 Associate Membership, 1 19 oz. RRW tumbler, an RRW Pen, and a Dinner for two.

Exclusive Benefits for Patrons

Members of our Patron Program will enjoy recognition on our website and in our newsletter. Your involvement not only strengthens our team but also celebrates your commitment to our shared cause.

How to Join

Your support is invaluable to the Richardson Republican Women. To become a Patron, you can join online at rrwpac.com or complete the Patron Form and mail it, along with a check made out to RRW, to:

Richardson Republican Women
P.O. Box 831626
Richardson, TX 75080

We sincerely appreciate your consideration and support. Together, we can make a lasting impact in the 2026 Elections!



Richardson Republican Women Patron Program Application

The Patron Program: Strengthening Our Mission

To boost our efforts and extend our reach, we have a Patron Program. This initiative will supplement our support for Republican Candidates and to further our community service projects. The Patron Program is open to everyone who wishes to contribute and play a vital role in the success of the Republican Party.

Patron Program Levels

- **Patron:** \$100 Includes an RRW Commemorative Pen & a US Flag.
- **Freedom Patron:** \$250 Includes a 19 Oz.RRW tumbler, an RRW Pen, & a US Flag.
- **Liberty Patron:** \$500 Includes 1 primary membership, a 19 oz. RRW tumbler, RRW Pen, a US Flag, & a local restaurant gift card.
- **Patriot Patron:** \$1,000 Includes 1 primary membership, 1 Associate Membership, 1-19 oz. RRW tumbler, an RRW Pen, a US Flag, and a Dinner Gift Card for two.

Please fill out and turn in with your payment:

Name _____ DOB ___/___/___

Address _____

City _____ Zip _____

Phone _____ VUID# _____

SD# _____ CD# _____ Precinct # _____

Email _____

Occupation/Employer _____

Signature _____ Date _____

Make checks payable to: Richardson Republican Women,
PO Box 831626, Richardson, Texas 75083

Thank You for your Patronage!



Richardson Republican Women Upcoming Programs

Diane Dees
First VP Programs

"May our visions be clear and may our actions always match the beliefs of our faith."

February 17, 2026

6:00 pm dinner on your own

6:45pm meeting

Spring Creek BBQ

270 N Central Expressway

Richardson, TX 75080

Speaker: **Senator Bob Hall** – Interim Legislative Update

Bob Hall was first elected to the Texas Senate in 2014 serving District 2, which covers all of Kaufman, Navarro, Rockwall, and Van Zandt counties, and parts of Dallas, Collin, and Ellis counties. Hall serves as the Chair of the Senate Committee on Administration and an influential voting member on the Senate Committee of Finance, Health and Human Services, State Affairs and Veterans Affairs.

March 17, 2026

6:00 dinner on your own

6:45pm meeting

Spring Creek BBQ

270 N Central Expressway

Richardson, TX 75080

Speaker: **Steve Munisteri** –Elected Chairman of the Republican Party of Texas in 2010-2015. He also served as the chairman of the Texas chapter of the Young Americans for Freedom and founded the Young Conservatives of Texas in 1980, In 2017, Munisteri was appointed to White House staff as deputy assistant to the President & principal deputy director of the office of Public Liaison. Currently, he serves as a Senior Advisor to Governor Abbott.

RRW Community Service

Caring for America Update from Committee Chair Catherine Tolliver

RRW members participated and/or donated to two RRW community service/ Caring for America activities last quarter:

1. Caring By Sharing-Dictionary Distributions:

For several years, we delivered paperback dictionaries to entire 3rd grade classes at one or two Richardson elementary schools each year. In 2025 we expanded our activity to include adult ESL classes in Richardson. On December 2nd, we had our first great first visit with the ESL class meeting at Richardson United Methodist, and we had a great turnout of our RRW members! These are convenient paperback dictionaries that also include much more: useful mathematics and measuring tables, American songs and founding documents, names and brief bios of American Presidents, basic info on our 50 states, countries of the world, braille and sign language charts (There were 9 recipients, teacher, and 8 RRW members! At right: Kay, Linda, Diane Shirley, Susan; At left - Daphne, Catherine, Kerry).



It just takes about an hour to participate. Look for an email announcement when we schedule our next visit and join us (be in the next photo)!

2. "Joyland" gifts in December (for families served by Hope's Door New Beginnings Center

Hope's Door is a safe haven and way forward for women escaping human trafficking and/or family violence.

RRW fulfilled 2024 & 2025 holiday "Joyland" gifts by donating and/or shopping for families in the program, including basic necessities and wishlist items. This December we "adopted" two families :

"family 71" (29 y/o mom, 5 y/o son and 1 y/o son), with pots, pans, utensils, baking sheets, Hot Wheels, Transformer, several each of sweats, jeans, corduroys , and long sleeve school shirts for 3 y/o, an infant toy and half dozen infant clothing items for the baby; and

"family 72 (49 y/o mom and 14 y/o son), with make-up set, hair styling/smoothing iron, pajamas, robe, for mom and a soccer ball, guitar case, hoodies, and a Cowboys short for 14 y/o son.

We can all help Hope's Door year round by:

1. shopping at their resale thrift store, 2109 W. Parker Rd, Suite 224, Plano TX 75023;
2. visit their website and register to volunteer a 2-hr shift. Because the identities and whereabouts of their clients are strictly protected, volunteers will need to register online and authorize a background check (no fingerprints required), then select and attend an easy 2 hour training (at the Plano store, I believe), and then you can sign up to fill 2 hour volunteer shifts at either the resale store in Plano or as an office helper at the Garland location. Face-to-face work with the clients requires additional training. Here's the volunteer registration page: [Volunteer - Hope's Door New Beginning Center](#)

We need you!

Event photographer-We need a volunteer to help us take pictures at our monthly meetings.

Fundraising Chair-We need a volunteer to help raise funds for Richardson Republican Women



RRW Executive Committee

President	Shirley Raven
Recording Secretary	Natasha Lowery
Treasurer/PAC Treasurer	Fely Eichenberger
1st Vice President Programs	Diane Dees
2nd Vice President Campaigns	Linda Deskin
3rd VP Membership	Florence Allwood
Corresponding Secretary	Elaine Davis
Newsletter/Social Media	Graciela Custer
Chair of Legislation	Daphne Dark
Chair of Awards	Kerry Gaines
Chair of Community Services/Events	Catherine Tolliver
Parliamentarian	Susan Fischer
Chaplain	Anne Slagel
Chair of Hospitality	Kay Batten

Stay connected!

Website: rwpac.com/

Contact us at rrw1958@gmail.com

Facebook: Richardson Republican Women

Instagram: richardsonrepublicanwomen

Political advertising paid for by Richardson Republican Women, Treasurer Fely Eichenberger, PO Box 831626, Richardson, TX 75080. Contributions are not federal tax deductible as charitable contributions. Corporate contributions are not permitted.